

Librarians in Hospitals

Erin Boyce BA, MLIS
Clinical Librarian
London Health Sciences Centre



Sound familiar?

When I was completing my MLIS, the most common thing people said to me was:

“I didn’t know you needed a masters degree to be a librarian!”

Now that I work in a hospital library, the most common thing people say to me is:

“I didn’t know there are libraries in hospitals!”



Agenda

- ▶ The Hospital Setting
- ▶ Services
- ▶ Resources
- ▶ Benefits, Challenges & Essential Skills



The Hospital Setting

- » The terms and lingo
 - Embedded/Clinical Librarianship
 - Evidence-Based Practice Justification
 - The Team vs Solo Experience

Embedded Librarianship

Embedded librarianship seeks to:

- ▶ integrate librarians into user environments;
- ▶ support services of their users;
- ▶ maintain a user-centric approach to library services

(Kesselman & Watstein, 2009)



Clinical Librarianship

Clinical librarianship seeks to:

- ▶ integrate librarians into healthcare teams;
- ▶ support decision making of healthcare providers;
- ▶ provide information to healthcare providers; and
- ▶ promote **evidence-based care/practice**

(Winning & Beverley, 2003)



Evidence-Based Practice

Evidence-Based Practice seeks to integrate:

- ▶ clinical expertise/expert opinion
- ▶ external scientific evidence
- ▶ client/patient/caregiver perspectives

(Sackett D et al., 2000)



Achieving Integration:

Senior management & sponsorship

- ▶ Professional Practice & Chief Nursing Executive – seen as part of team
- ▶ Library manager is accessible and resourceful


Information at the point of need (time and space)

- ▶ Library space in the hospital
- ▶ Online request forms
- ▶ Evidence attached to chart (electronic health records)
- ▶ Information pushing

Meetings & events

- ▶ Invited to Continuous Quality Improvement (CQI) meetings
- ▶ Invited to Professional Practice at its Best conference
- ▶ Attending grand rounds with pre-prepared lit searches
- ▶ Searching on-the-fly during meetings/research days
- ▶ Invited to evidence-based initiatives

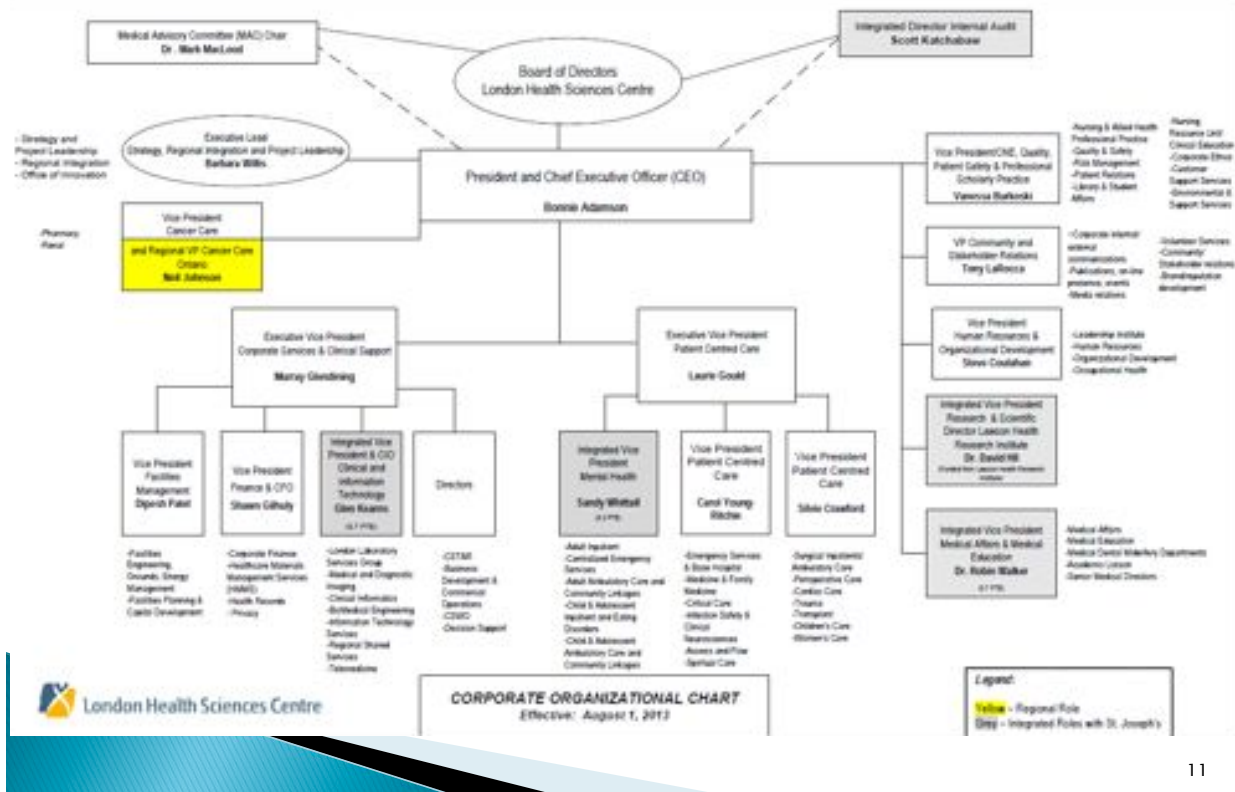
Justification

- ▶ **Governing Bodies**
 - Policies that directly or indirectly support us:
 - Education Affiliation Agreement(s) with Western.
 - Liaison Committee on Medical Education
 - Accreditation Canada – CHLA is doing more to advocate for specific “library related terminology”
 - ▶ **Corporate Administration and Stakeholders**
 - Strong manager to advocate for the program
 - Step up in crisis – eg. Daily fatality and case counts for H1N1
 - Speak to the needs of the corporate trajectory
 - Annual Briefing provided to administration
 - Participation in “The Value Study”
 - ▶ **Brass Tacks in client interactions**
 - Only one chance for a first impression
 - Relationship management
 - Turn around time and maintaining relevance
 - Demonstrating value of *different* education, *not inferior* – unique, beneficial skill set
- 

Solo vs Team Experience

- ▶ **London Health Sciences Centre Team**
 - 1 Manager
 - 7 Clinical Librarians
 - 2 Technicians
 - ▶ **3 Library Sites**
 - Victoria Hospital (including Children’s Hospital)
 - University Hospital
 - London Regional Cancer Program
- 

Portfolio Model



Solo Librarianship in Hospitals

- ▶ Responsible for management, professional services and technical services
- ▶ May have to split time between multiple smaller hospital sites
- ▶ Chose your battles -
 - May provide limited professional services such as literature searches
 - Use instruction to enable client self-sufficiency
 - Ensure clients have access to resources themselves

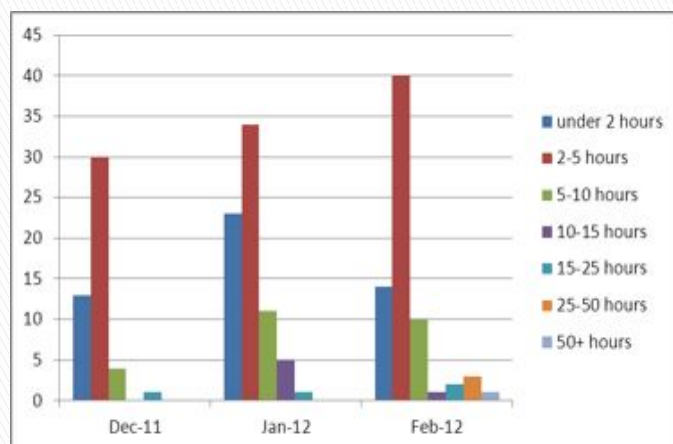


Services

- » Literature Searching
- Systematic Reviews
- Complex Reference
- Instruction
- Publication Support
- Current Awareness
- Article/Book Requests

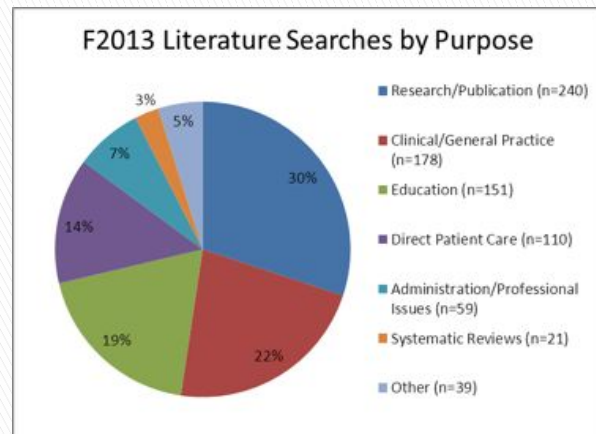
Literature searching

- ▶ Can be requested in person, by e-mail, phone or online
- ▶ **798** Searches done in 2012
- ▶ Range in complexity and time taken to conduct the search
- ▶ Typically done in 2 or more databases for any given topic
- ▶ Turn-around time based on urgency and purpose



Time taken to conduct a search

Literature Searching



Who is Requesting?

What does the search support?

Systematic Reviews

- ▶ Currently considered one of the best sources of evidence in medical literature
- ▶ Perfect place for librarians to integrate
- ▶ Synthesis (narrative or statistical)
- ▶ Must find ALL studies on topic
- ▶ Time and skill intensive
- ▶ Authorship?



Complex Reference

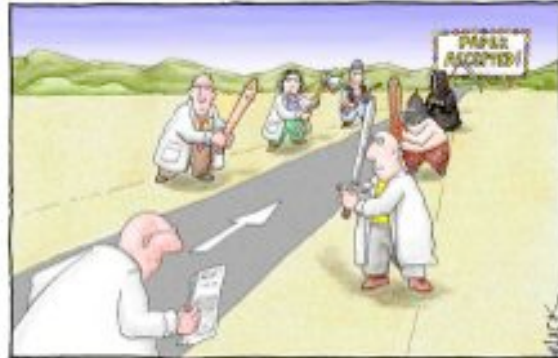
- ▶ Asked in person and through online request form
 - How many studies on ICU interprofessional care teams have been published by P. Pronovost?
 - What factors affect the progression of labour?
 - Who are the leading authors publishing about LBK1 /stk11 AND AMPK?
 - What is the prevalence of TB in Canada?
 - What are some seminal articles about the input output throughput model?
 - Can you find the new lipid guidelines that refer to creatine kinase?

Instruction



Publication Support

- ▶ Citation Management Software
- ▶ Finding Impact Factors (Web of Science)
- ▶ Suggesting journals for submission based on topic search
- ▶ Informal assistance with copyright issues and citation style



Most scientists regarded the new streamlined peer-review process as 'quite an improvement.'

Current Awareness

- ▶ Assisting clients with topic based searches for regular updates
- ▶ Setting up e-TOCs and RSS alerts
- ▶ Directing clients to pre-appraised filter services (BMJ Evidence Updates, McMasterPLUS etc)

“It has been estimated that, to remain up to date in a medical specialty, a clinician would need to read for 3h 19 min per day 7 days a week.”

(Pedersen & Moller, 2001)



Doc Delivery/ILL

- ▶ Attempt to educate users to be self-sufficient
 - Classes on article retrieval through LHSC
 - Western affiliates have access to Western Libraries
- ▶ Document delivery done to assist busy clients (and their secretaries...)
- ▶ Interlibrary Loan is free of charge
- ▶ Online article [request form](#) for convenience

Online Submission Form



The screenshot shows the 'Article/Book Request Form (LHSC)'. The form includes the following fields:

- Name:
- Email:
- 1. Telephone/Fax:
- 2. Hospital Site: *
- 3. Delivery Method:
- 4. Fax (if applicable):
- 5. Copy and paste the citation(s) here:
- 6. Date needed by:
- 7. Article or Book?
- 8. Additional Comments:
-



Resources

- » Consortia/WOHKN
- Journals
- Monographs
- Databases

Consortia/WOHKN

- ▶ Simplify vendor negotiation
- ▶ Buying power for e-resources
- ▶ Coordination with Western to avoid resource duplication
- ▶ Coordination of e-books and e-journals to accommodate shared IP address with St. Joseph's Health Care
- ▶ Access for remote area hospitals
- ▶ Accommodating staff who are NOT Western Affiliates



WOODSTOCK HOSPITAL



Journals Facts and Stats

- ▶ Titles in print \approx 10
- ▶ Titles online \approx 400

Issues:

- ▶ Embargoed titles
- ▶ Package deals
- ▶ One-off core titles
- ▶ Budgetary issues
- ▶ Usage statistics

Top Medical Journals

British Medical Journal (BMJ)

Annals of Internal Medicine

Lancet

New England Journal of
Medicine (NEJM)

Canadian Medical
Association Journal (CMAJ)

E-Books facts and Stats

- ▶ 106 Titles
- ▶ Hosted/Linked through:
 - Stat!Ref
 - Access Medicine (McGraw Hill)
 - Access Surgery (McGraw Hill)
 - Books@OVID
 - Business Book Summaries
 - NCBI Bookshelf
 - Psychiatry Online

Issues


- ▶ Promotion
- ▶ Client Preferences
- ▶ Duplication
- ▶ Shared IP address

Books Facts and Stats


Total # of Print books

- ▶ UH - 1000
- ▶ VH - 968
- ▶ CH - 504
- ▶ LRCP - 858

Issues

- ▶ Serving all professional groups
 - ▶ Resource spread across sites
 - ▶ Doing more with less
- 

Key Databases & Point of Care Tools

- ▶ Medline (OVID)
 - ▶ PubMed (Free)
 - ▶ Cochrane Library - EBM Reviews (OVID)
 - ▶ CINAHL
 - ▶ Health Business Elite
 - ▶ PsycINFO
 - ▶ Natural Medicines Comprehensive Database
 - ▶ PyscARTICLES (APA PsycNet)
-
- ▶ UpToDate
 - ▶ MicroMedex
 - ▶ E-CPS, E-Therapeutics
- 



Benefits, Challenges and Essential Skills

- » Benefits and Challenges
- Hard and Soft Skills
- Job Posting Comparison

Benefits and Challenges

- ▶ Collaboration and Teamwork
- ▶ Relationships with Clients
- ▶ Space
- ▶ Time Management
- ▶ Budgetary Issues
- ▶ Justification and Advocacy
- ▶ Professional Development

Essential Skills

Previous Job Posting:

- ▶ Advanced excellence in **literature searching**
- ▶ Advanced technical ability in using various **health sciences database** interfaces
- ▶ Skilled in the **critical appraisal**
- ▶ Proficient in applying and teaching **evidence-based clinical practice**
- ▶ Demonstrated success in **consultation, coaching** and **knowledge transfer**
- ▶ Proficient in the design, delivery and evaluation of various **education/ instruction approaches** for both individual and group contexts
- ▶ Advanced **interpersonal**, communication (both written and oral) and **relationship building skills**
- ▶ Advanced **time management**, organization skills
- ▶ Demonstrated ability in **problem solving** and decision making

31

Thank-You!

▶ Questions?

Erin Boyce BA, MLIS
Clinical Librarian
University Hospital, LHSC
Erin.Boyce@lhsc.on.ca



References

Kesselman, M.A. & Watstein, B. (2009). Creating opportunities: Embedded librarians. *Journal of Library Administration*, 49(4), 383–400.

Marshall, J.G. et al. (2013). The Value of Library and Information Services in Patient Care: Results of a Multisite Study. *Journal of The Medical Library Association*, 101(1), 38–46

Pedersen T, Moller AM. How to use evidence-based medicine in anaesthesiology. *Acta Anaesthesiol Scand* 2001; 45:267–274.

Sackett D et al. Evidence-Based Medicine: How to Practice and Teach EBM, 2nd edition. Churchill Livingstone, Edinburgh, 2000,1

Winning, M.A. & Beverley, C.A. (2003). Clinical librarianship: A systematic review of the literature, *Health Information and Libraries Journal*, 20(S1), 10–21.

